



ENVIRONMENT

# Corporate Environmental Performance

PAGE 1: Blue Teams

PAGE 2: Measuring our Performance

## Blue Teams

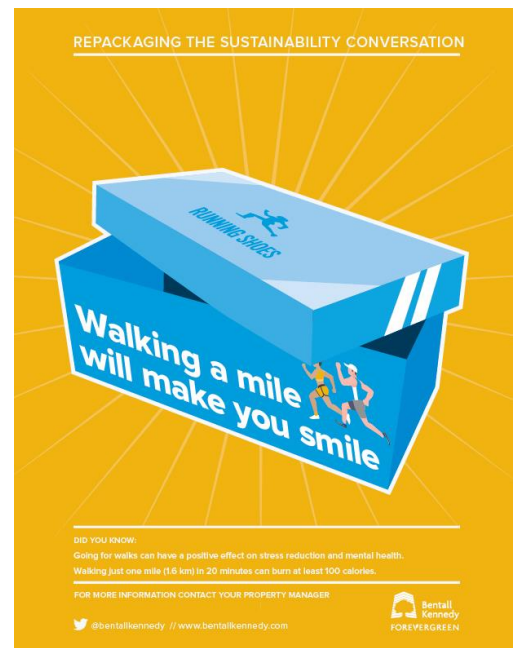
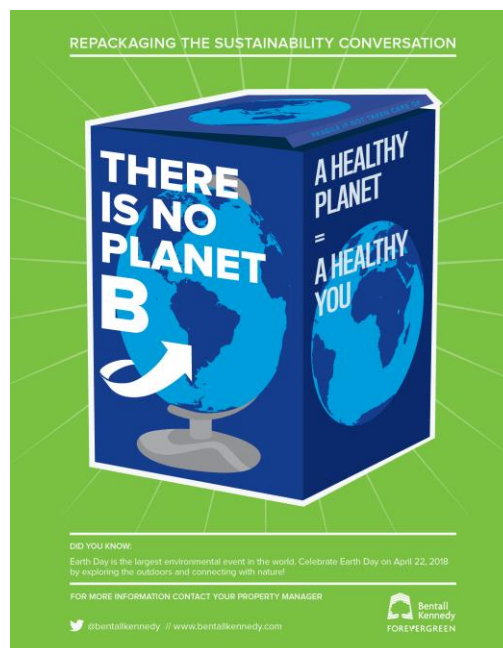
Bentall Kennedy strives to practice better business in our corporate operations as well as in the properties we manage. Our Blue Team network spans 12 cities across North America and plays an important role within our offices by recruiting volunteers, implementing initiatives and spreading the sustainability message to all Bentall Kennedy employees.

We are increasingly asking our tenants to work with us to improve environmental performance, and we must lead by example. Tenant engagement around sustainability is a priority for Bentall Kennedy, and we use our own program to guide our own employees' actions.

### Leading by Example with BOMA BEST Sustainable Workplace Certification

Bentall Kennedy's Carlson Court office in Etobicoke, ON was among the first in Canada to be certified under BOMA BEST Workplace, a certification standard for office tenants.

Our offices in San Francisco, Bethesda, Boston, Seattle and Chicago are the first five BOMA BEST certified sustainable workplaces in the U.S.



A sample of monthly ForeverGreen Tenant Engagement Program posters used by our Blue Teams to encourage sustainable actions



## Measuring our Performance

Our corporate carbon footprint (the greenhouse gas (GHG) emissions associated with our corporate operations, including our corporate offices, employee commuting and business travel) is the primary metric we use to measure our performance. Since 2013, we have maintained our commitment to carbon neutrality for our corporate operations through renewable energy credits (RECs) and carbon offsets. In 2017, we completely offset our corporate GHG emissions from electricity with the purchase of RECs, and natural gas, steam, employee travel and commuting with the purchase of carbon offsets. We purchase Green-e or EcoLogo certified renewable energy credits which ensure that new green power is added to the electricity grid. We also purchased carbon emission offsets through Renewable Choice Energy.

Our GHG emissions are calculated using several data sources. Energy use is based on energy consumption in corporate offices, which is based on proportional share of a building's energy use where that data is available. Otherwise, a standard energy use factor is applied. In previous years, emissions from business travel were based on employees' travel expenses, and commuting data was a result of an employee survey. For 2017, estimates were made based on previous years' data and multiplied by a factor to account for the change in employee workforce.

## GHG emissions from corporate operations (tCO<sub>2</sub>)

| Source                       | 2013         | 2014         | 2015         | 2016         | 2017         |
|------------------------------|--------------|--------------|--------------|--------------|--------------|
| Electricity (mixed sources)  | 700          | 770          | 650          | 733          | 747          |
| Natural Gas                  | 331          | 217          | 208          | 263          | 381          |
| Steam                        | 1            | 1            | 1            | 3            | 0            |
| Deep Lake Water Cooling      | N/A          | N/A          | N/A          | N/A          | 4            |
| Business Travel (auto)       | 132          | 142          | 147          | 146          | 121          |
| Business Travel (air)        | 714          | 708          | 783          | 804          | 733          |
| Employee Commuting           | 716          | 769          | 794          | 789          | 654          |
| (RECs)                       | (700)        | (770)        | (650)        | (733)        | (747)        |
| <b>Total Gross Emissions</b> | <b>1,894</b> | <b>1,837</b> | <b>1,932</b> | <b>2,004</b> | <b>1,893</b> |
| (Carbon Offsets)             | (1,894)      | (1,837)      | (1,932)      | (2,004)      | (1,893)      |
| <b>Total Net Emissions</b>   | <b>0</b>     | <b>0</b>     | <b>0</b>     | <b>0</b>     | <b>0</b>     |